

ULTRA

SCREENS



ULTRA DECK

SCREEN

SPECIFICATION BOOK

DESCRIPTION:

Heavy Duty Mobile Compact Deck Screen with the Following Features:

- 15 Hp Kubota Engine.
- Wheeled (towed) .
- 3m x 1.2m screening area
- Double deck screen
- Fast On Site Setup Time – 10 Minutes

DIMENSIONS AND WEIGHT:

Length – Transport / Operational	6m
Width – Transport / Operational	2.5m
Height – Transport / Operational	3m
Weight – Transport / Operational (Punch Plate)	3 Tonne

CAPACITIES:

Capacity – PAN FEED HOPPER	2 m ³
Diesel Tank Capacity	40 Ltrs

ENGINE:

Engine Type	KUBOTA Z602 DIESEL
Engine Power	15 HP
Fuel Consumption	2Ltrs/Hour

ELECTRICS:

Chassis Cabling	SWA Cable
Emergency Stop	Power unit RH&LH
Engine Shutdowns	Low Oil Pressure High Temperature Air Filter Blockage

FINES CONVEYOR:

Gearbox	BERMA
Gearbox Torque	750 Nm cont
Gearbox Ratio	1:3
Flow Rate	36Lpm
Belt Width	1150mm
Belt Length	5.5m
Belt Spec	3 Ply 5mm Top
Drive Drum Dia	220mm ()
Tail Drum Dia	200mm ()
Maximum Speed	120 RPM

Ultra Deck screen user instructions

Ensuring deck screen unit is in correct operational condition position

On receiving your new Ultra Deck screen, it is intended to be delivered in a ready to work condition. However, due to volatilities outside our control the following must be checked before operation

Bolts and screw systems

During transportation it is common that bolts and system within the screen may have altered or become loose. It is required that before the unit is first operated that the user must check that all bolts are tight, conveyor belts and drive belts are correctly tensioned to allow proper operation of the machinery. If unsure, please contact Ultra Plant, or your local agent directly.

Correct setup/location of plant

It is vital for the safe and correct operation of the machine that the plant is set up correctly on a level plain, all guards are closed during operation. See below...



Incorrect setup

Uneven Ground Terrain
Guards Open



Correct Setup

Level Ground Terrain
Guards Bolted closed

Before start up, ensure that no persons are under the machine or moving conveyors and that they are out of way of falling materials from the unit.

Start up ignition / Start Panel / Stopping the machine

Battery

: Starting the machine for use

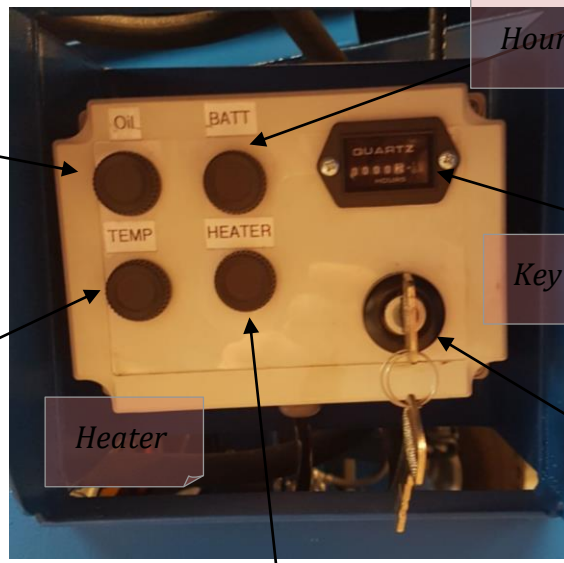
Oil

Temperature

Hour Clock

Key

Heater



Starting the machine:

Inset key into starter panel and switch two strokes to the right, and hold in place until the engine is fully running.

Note:

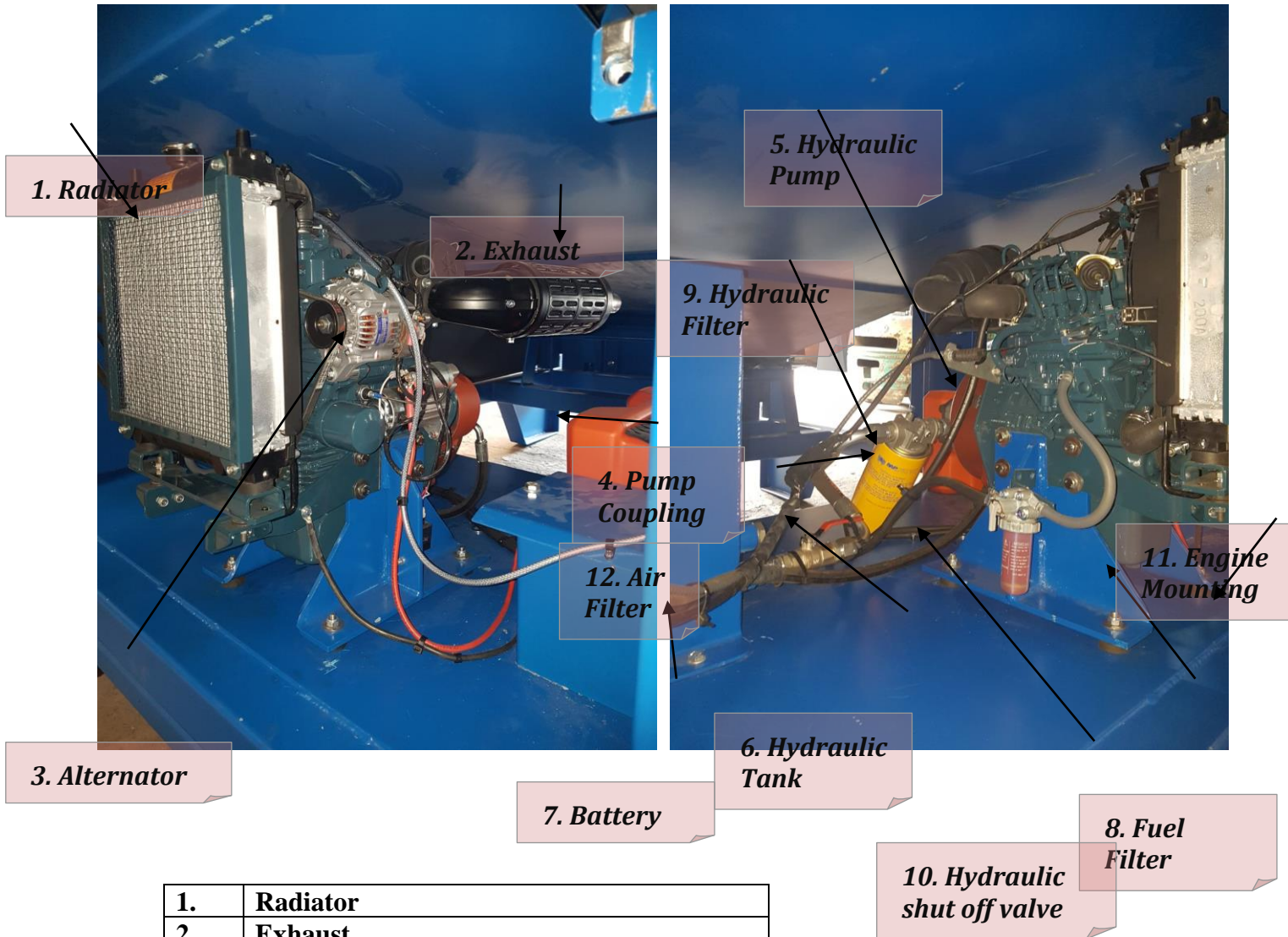
If the Unit is fitted with a throttle, you will have to increase the engine revs accordingly to ensure the unit is driving at the correct speed. It is recommended that the engine runs at 2/3 power

Stopping the machine:

At the end of use, the Ultra Deck screen pan and conveyor must be free of screening and processing material before stoppage.

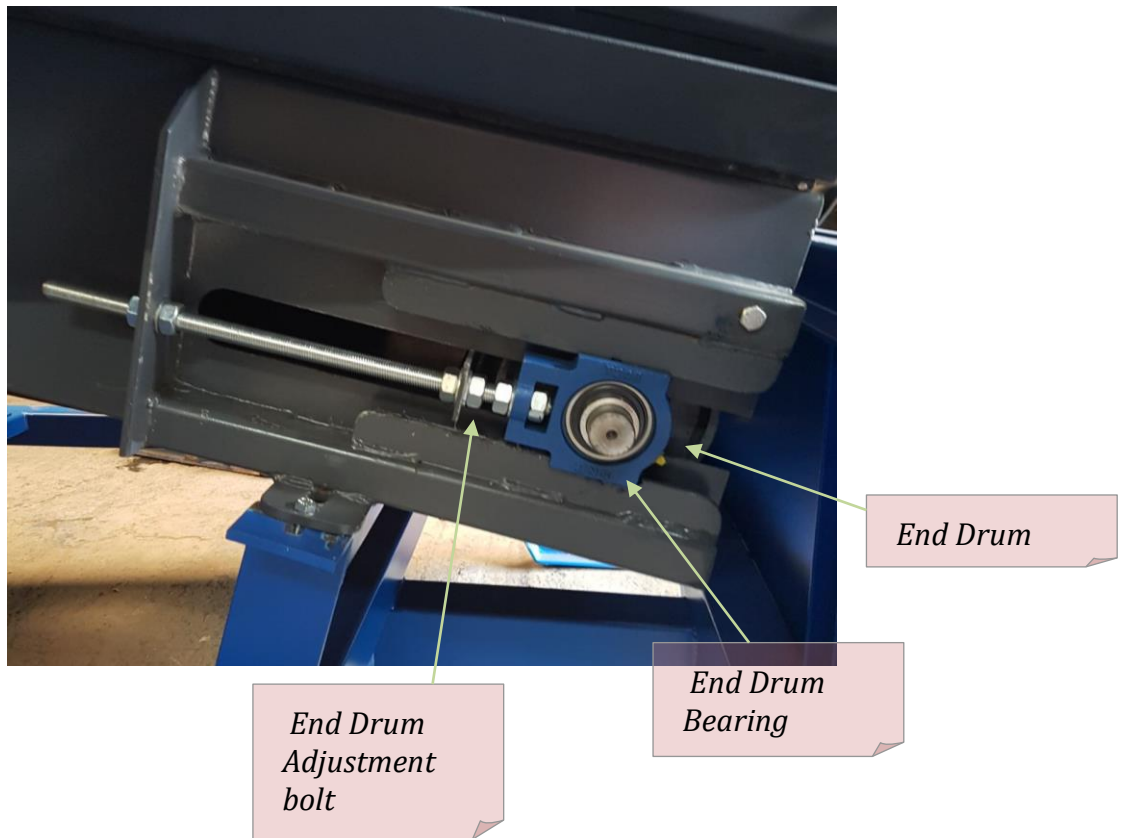
The Engine Area / Hydraulic system maintenance

ENSURE ENGINE IS SWITCHED OFF BEFORE MAINTENANCE AND INSPECTION



1.	Radiator
2.	Exhaust
3.	Alternator
4.	Pump Coupling
5.	Hydraulic Pump
6.	Hydraulic Tank
7.	Battery
8.	Fuel Filter
9.	Hydraulic Filter
10.	Hydraulic Shut OFF Valve
11.	Engine Mounting
12.	Air Filter

Conveyor belt maintenance and adjustment



Bearing

Conveyor tightening point / tension bar / belt tracking

IMPORTANT

At the beginning of use, identify that the belt is running in line, if this is not the case adjust the threaded tension bar in the direction you wish the belt to move toward.

If you are unsure or have any questions, do not hesitate to contact your local Ultra Plant dealer.

Belt Tension bracket



5. Drive Drum

1. Adjust the tension bolt to align head drum

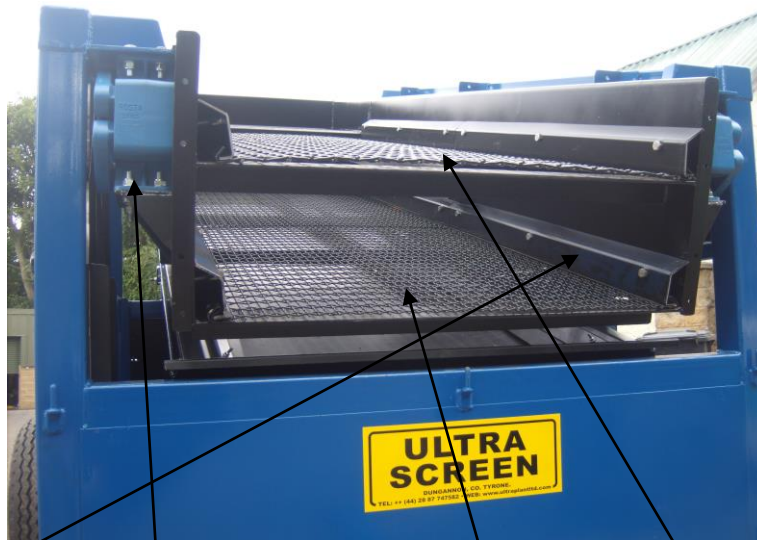
3. Head Drum and motor drive

2. Head drum gearbox

4. Drive Drum Bearing

Contact your local Ultra Plant dealer for clarity and more information

Deck Mesh



*Mesh Clamps
and Bolts*

*Vibration
Mounts*

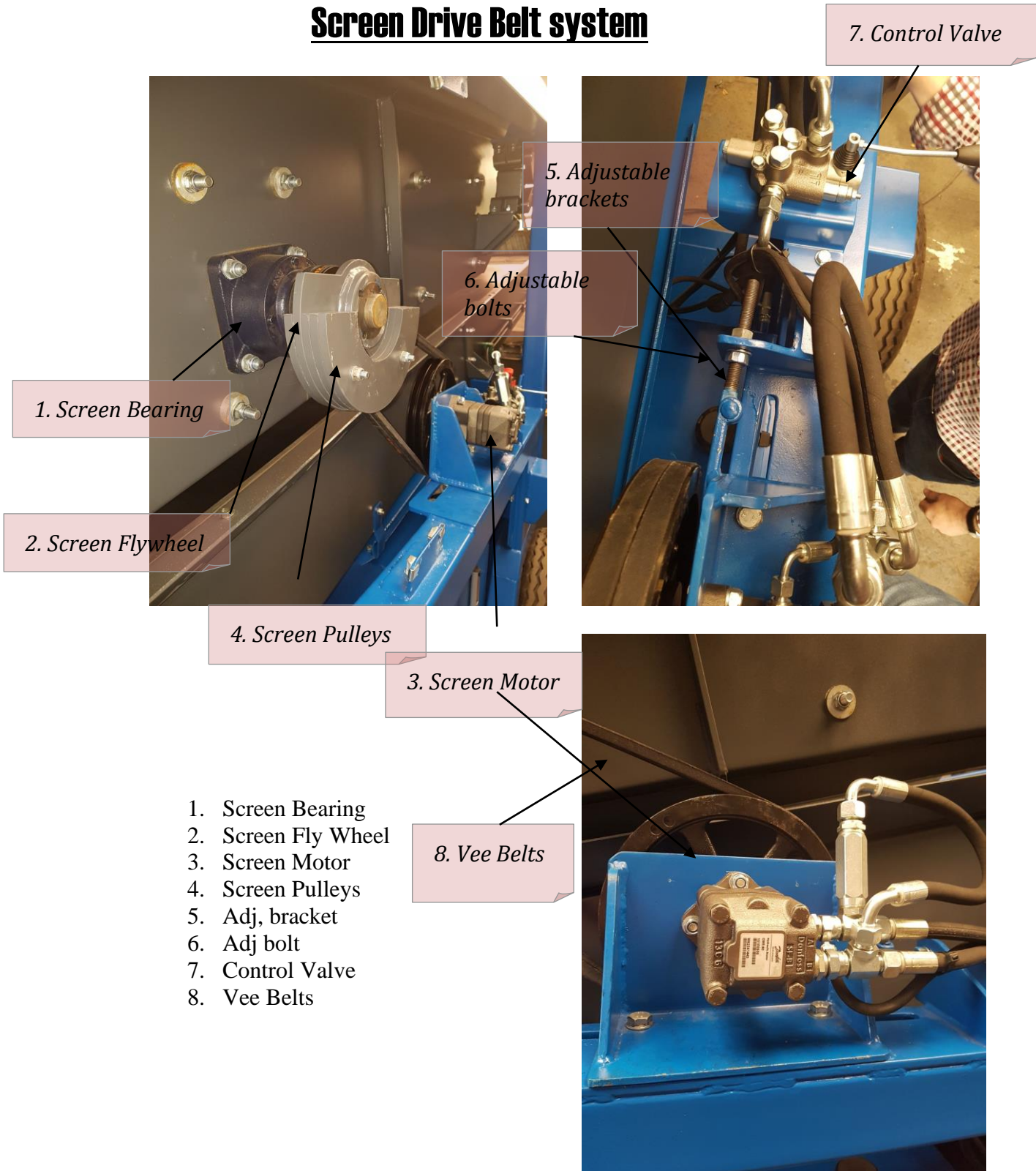
*Bottom Mesh
Deck*

Top Mesh Deck

Ensure all of these component bolts are tight before use

Failure to ensure all of the above are maintained will result in the damage of the machine and violation of the warranty terms offered.

Screen Drive Belt system



1. Screen Bearing
2. Screen Fly Wheel
3. Screen Motor
4. Screen Pulleys
5. Adj, bracket
6. Adj bolt
7. Control Valve
8. Vee Belts

Fuel and Hydraulic Tank

Fuel Tank

Hydraulic Tank



**Remaining
maintenance
schedule should
be as follows**

*Eye level hydraulic oil
gauge*

Daily (10 hrs)

- Check Air intake filter,
- Check oil and fuel levels,
- Check conveyor belt for alignment adjust accordingly
- Check screen mesh is secure

Weekly (50 hrs)

- Grease bearings, Never over grease bearings, these are located as per diagram
- Check all bolts holding motor and gear box and tighten if necessary,

Quartely (500 hrs)

- **Check hoses for any leaks or damage**
- **Check conveyor belts and rollers for wear or damage**
- **Check roller brush for wear, the brush is self adjusting.**
- **Check screen mesh for wear or damage**
- **Check battery connections and fluid etc.**
- **Check all skirt rubber for wear as worn rubbers may leak material.**

For more information contact your
Ultra Screen Dealer, or visit
www.ultrascreeners.com

Parts List.

<u>Part Number</u>	<u>Part Description</u>	<u>Number Require</u>
UD113	Ignition switch	1
UD114	End Drum	1
UD115	End Drum Bearing (50mmTU)	2
UD116	Drum Adjustment Bolt	2
UD117	Drive Drum	1
UD118	Drive Drum Gearbox (RT90)	1
UD119	Drive Drum Motor (OMR 125)	1
UD120	Drive Drum Bearings (50mm FL)	2
UD121	Screen Mesh	4
UD122	Screen Clamps	4
UD123	Screen Tension Bolts	24
UD124	Screen Sloped Washers	24
UD125	Screen Rosta Mounts	4
UD126	Screen Bearings	2
UD127	Screen Flywheel	2
UD128	Screen Fly Wheel Weights	8
UD129	Screen Motor (oms 80)	1
UD130	Screen Pulley (spa 400)	1
UD131	Screen Motor Pulley (spa 150)	1
UD132	Screen vee Belts (2m Spa)	2
UD133	Flow Control Valve (45L)	1
UD134	Hose Kit	1
UD135	Hydraulic Tank	1
UD136	Oil Level Gauge	1
UD137	Hydraulic Fuel Filter	1
UD138	Hydraulic breather Cap	1
UD139	Fuel Tank	1
UD140	Fuel Filter	1
UD141	Fuel lines	2
UD142	Battery Box	1
UD143	Battery (70 Amp)	1
UD144	Axel (6 stud)	1
UD145	Wheels (6 stud)	2
UD146	Engine (refer to engine manual)	1
UD147	Drawbar	1

